



SEALANT ENTERPRISES

SAFETY . EFFICIENCY . POWER

Single Touch Couplers

for filling & Pressure/Leakage testing



X Multiply your testing
Efficiency



SAFETY . EFFICIENCY . POWER

Single Touch Couplers for Pressure & Leakage testing

The new patented Sealant STC series is specially designed to suit all kind of end connection. The STC series simplifies, shortens, and secures the testing process and improves testing efficiency by many folds.

Each coupling is specially designed as per the customer's requirement.

Patented collet-type clamping ensures maximum gripping with no damage to the port. The single touch feature allows connection and disconnection within seconds.

The use of Single Touch Couplers has proven to increase productivity and testing efficiency by many folds.

The use of STC eliminates miscellaneous screwed in joints and clamped hoses or pneumatic pistons and other fittings.



Specification

- Maximum operating pressure (psi/bar) - (725/50)
- Locking mechanism - Handheld
- Operating temperature range - (Depending on seal selection) from -50 to + 250°C
- Material of Construction - High-grade steel/Stainless steel
- Positive clamping in form of collet clamps

Features

- Provides leakproof connection within seconds.
- Eliminates manual tightening and clamping.
- Easy & safe to operate.
- High-pressure resistant.
- Collet type clamping ensures maximum locking.
- Testing efficiency increased many folds.
- Time and Cost saving.
- Can accommodate size variation & ovality in pipe/port



X Multiply your testing
Efficiency



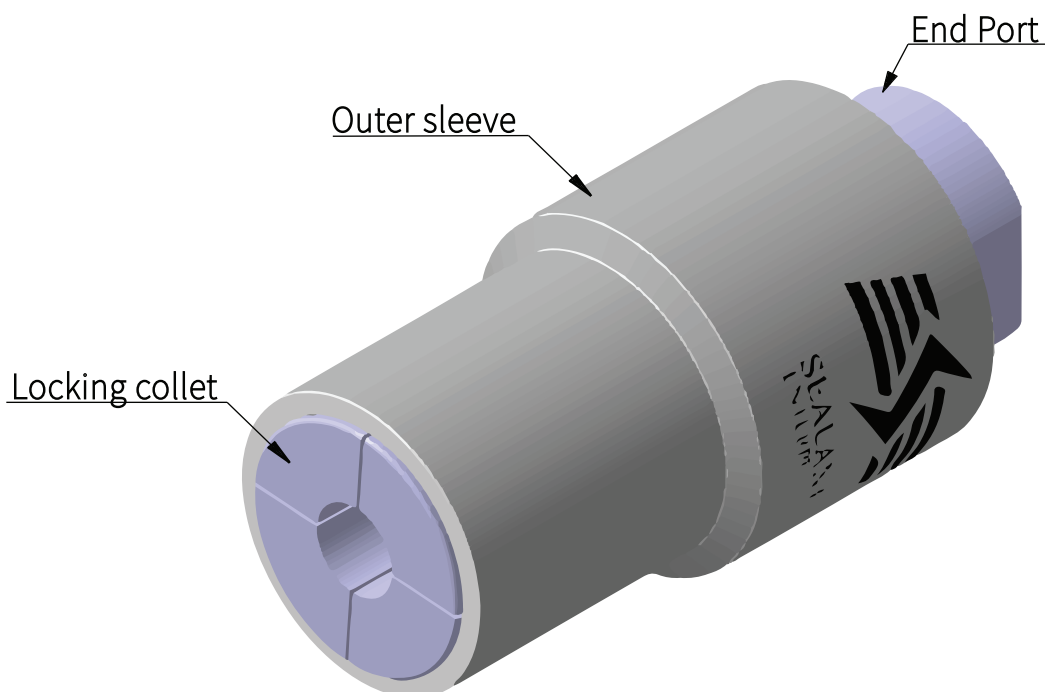
SAFETY . EFFICIENCY . POWER

Compatibility -

Sealant STC series can be used to test any kind of pipe beadings, flanges, collar, rims, barbs, etc. Each coupling is suited with an end port of threading as per the choice of the customer. The pressure line or inlet hose should be connected to the end port with a connector.

After the pressurized line is fixed, pull the outer sleeve back to open the locking collet. Insert the end connection into the coupling. Press the coupling to lock the collet. The tapered profile helps to lock uneven or oversized diameter along with oval pipes and ports up to the given tolerance. After pressing the coupling, the outer sleeve slides on the locking collet, clamping it down on the port.

While disconnecting the coupling, the end port should be depressurized. Pulling the outer sleeve back will release the end connection from the locking collet and coupling will be disconnected.





SAFETY . EFFICIENCY . POWER

Image 1

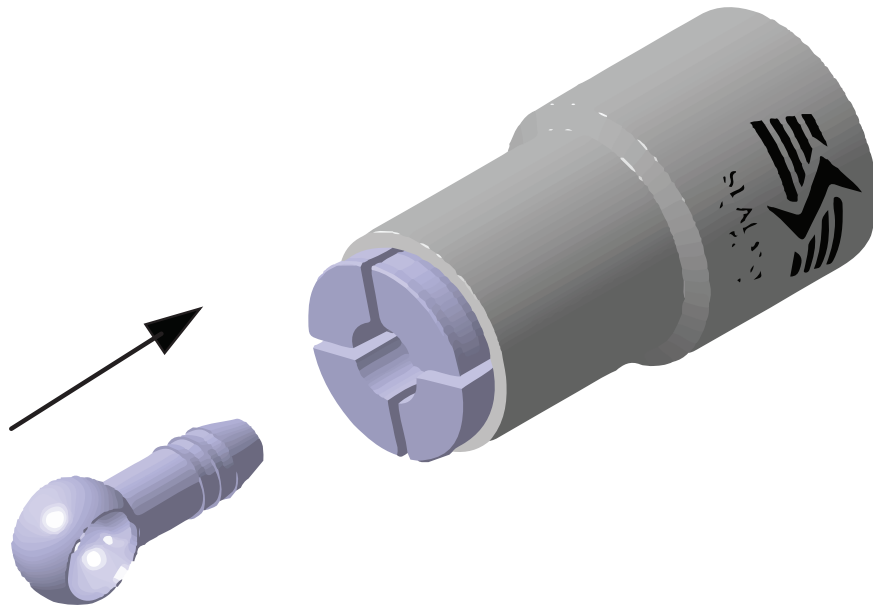
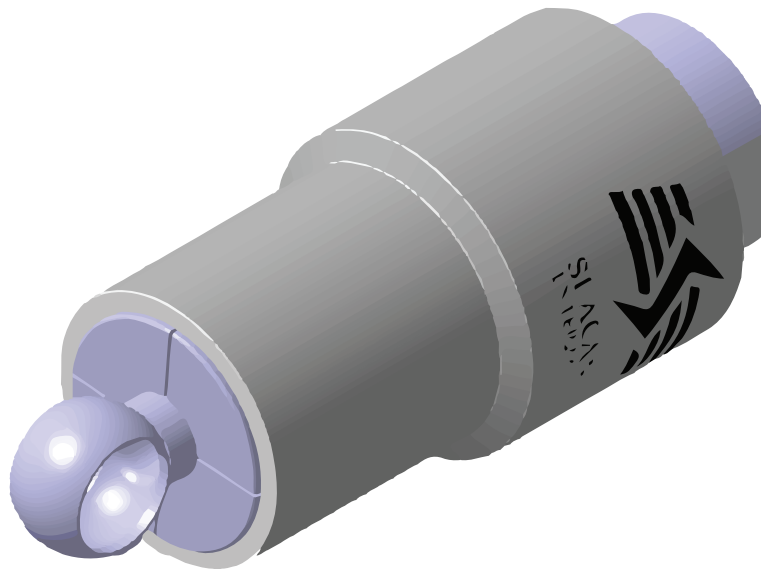


Image 2



Sealant single touch coupler can clamp down on the port with maximum gripping. As shown in the image 1 the coupler is in open state. In this state, the outersleeve is in a retracted position and the collet is in open condition. The coupler will stay in this position unless the coupling is inserted on the port. This feature is called the single touch feature. The tapered collet ensures the coupling will overcome any clamping variation. When the coupler is inserted on the port, the outer sleeve will slide forward closing the collet onto the port. The port is clamped from all the sides and a firm grip is ensured as shown in the image 2. Testing or filling process can then commence. Once the process is done the outer sleeve can be pulled back to release the coupler from the port.

X Multiply your testing
Efficiency



SAFETY . EFFICIENCY . POWER

Usage & Safety guidelines

- Safety protocol must be implemented while working in hazardous environment.
- Coupler should only be used on the designated port.
- Proper clamping should be ensured before commencing any test.
- Coupler should be used within the temperature & pressure range mentioned.
- Coupler should be stored in safe & chemical free environment which will not result in any damage to the coupler or the seal.
- Sealant enterprises won't be responsible for any damages or injuries caused due to wrong usage or mishandling.
- Dismanteling of the coupler should be done by SEALANT representative only.
- Periodic lubrication should be done to achieve best life for the consumables.
- Seal should be inspected after particular period .

Application guidelines

- On arrival, the package should be checked for any damage or loose parts. (If found, SEALANT should be informed).
- Make sure the coupler is mounted on the right port.
- The port on which the coupler is mounted should not be damaged & should be free of burrs of any kind.
- Each coupler is made within a specific pressure & temperature range. Make sure the coupler is used within the specified ranges.
- Initial trial & testing should be done in a closed and safe environment.
- Connection & disconnection of coupler should be done at ambient pressure only.
- STC coupler does not carry any internal shutoff valve unless specified before.
- After connection, the coupler should be left free and should not experience any external mechanical or human load.
- Attachment of a clamp or a binding chain is recommended while testing at high pressure.
- Each coupler has a closed-end or (threading/barb) to facilitate a closed-end or (inlet/outlet line).



SEALANT ENTERPRISES

SAFETY . EFFICIENCY . POWER

Designing | Manufacturing | testing

Sealant Enterprises

Providing Clamping & Sealing solutions past 33years

Contact

For queries and more information please contact us

MADE IN INDIA

Plot no-2/10 S No - 64/5 Chintamani Ind Estate
Wadgaon (BK) Behind Abhiruchi Mall
Sinhagad Rd, Maharashtra, Pune.
Pin - 411041

+91 8605584910 - G Warad - Contact person
swgadre@gmail.com - Mail Id
sealantent.com - Website

© All rights reserved by SEALANT ENTERPRISES. Use, copy, or reproduction by anyone other than Sealant Enterprises is strictly forbidden without prior written consent. Images and illustrations are for illustrative purposes only. The actual product may differ from them.

X Multiply your testing
Efficiency